



INSTRUCTION MANUAL

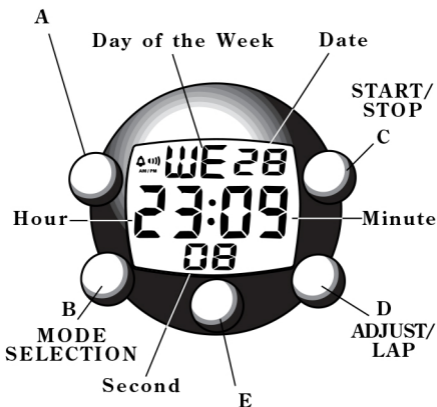
CAL. YK06(R23 SERIES)

■ CHARACTERISTICS

1. **Dual time:** Time in a different time zone can be set and displayed.
2. **Countdown timer:** The timer time can be set up to 23 hours 59 minutes and 59 seconds in one second increments.
3. **Stopwatch:** Measures up to 59 minutes 59 seconds and 99 with 1/100 second readout.
4. **Alarm:** The alarm can be set to ring on a 24-hour basis.
5. **Time/Calendar:** Hour, minute, second, date and day of the week are displayed.
6. **Illuminating light:** The built-in electroluminescent backlight illuminates the display for viewing in the dark.

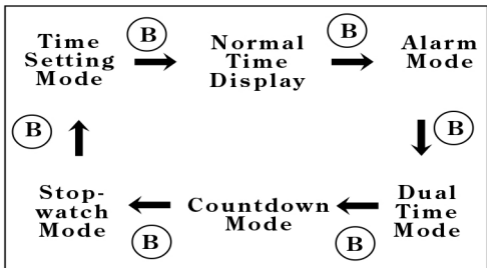
■ BUTTONS AND DISPLAYS

ILLUMINATING LIGHT
FOR
3 SECONDS

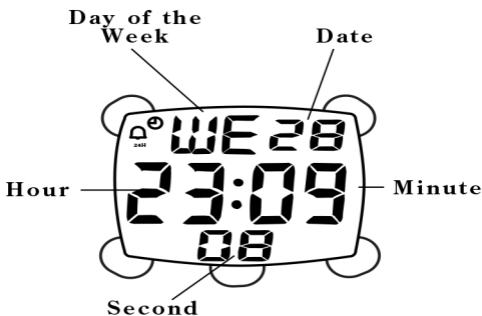


ILLUMINATING LIGHT

The display mode changes over in the following order by pressing button B.



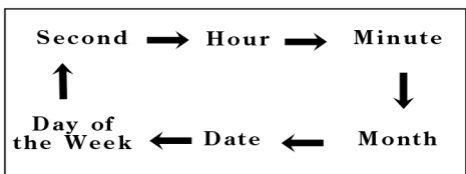
■ HOW TO SET THE TIME/CALENDAR



1. Press button B five times to go to the Time Setting Mode. The second digits start flashing.
2. Adjust the second digits by pressing button C.

Each press of button C advances the digit by one. To advance the digits quickly, keep button C pressed.

3. Press button D to confirm the second digits and move on to the hour setting.
 4. Adjust the hour digits and other items in the same way as Step 2 & 3. Press button C to adjust the digits and confirm it with button D and move to the next item.
- The item to be adjusted changes over in the following order.



6. After all the adjustments are completed, press button B to return to the Normal Time Display.

Second setting

Press button C simultaneously with a time signal. The second digits are reset to "00" and start immediately.

When button C is pressed while the second digits are between "30" to "59", one minute is added at the same time the second digits are reset to "00".

Choice of 12-Hour/ 24-Hour indication

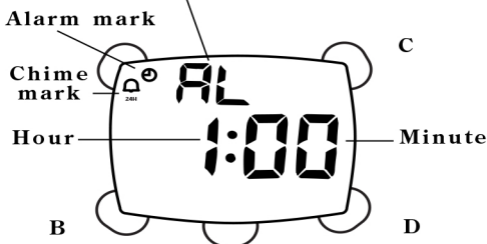
- The time display format in either 12-hour indication or in 24-hour indication can be selected alternatively by pressing button C in Normal Time Display.

Under the 12-hour indication format, “PM” mark appears in the afternoon, but no AM mark appears in the morning. Therefore, when setting the hour digits in the 12-hour indication, be sure that AM/PM is correctly set.

Under the 24-hour indication format, “24H” mark appears.

■ HOW TO SET THE ALARM

Alarm Mode Indicator



- Press button B once to go to the Alarm Mode. Mode indicator “AL” appears.
- Press button D to switch to the Alarm Setting Display. The hour digits start flashing.
- Adjust the hour digits with button C.

Each press of button C advances the digit by one. To advance the digits quickly, keep button C pressed.

- Press button D to confirm the hour digits and move on to the minute setting.
- Adjust the minute digits with button C and confirm it with button D in the same way as Step 3 & 4.
- After all the adjustments are completed, press button B to return to the Normal Time Display.

Alarm engagement/disengagement

In order to engage the alarm, press button C in the Alarm Mode. The alarm mark ☉ appears at the upper-left corner. The alarm is engaged and disengaged alternatively.

Chime setting

- The chime can be set to ring on the hour.

To set the chime, press button C in the Alarm Mode. The chime mark 🔔 appears at the upper-left corner.

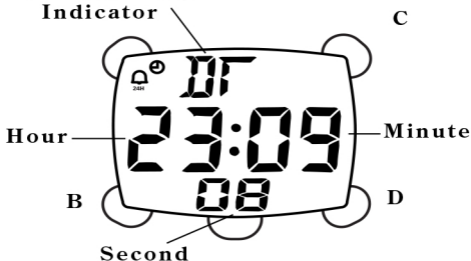
	Alarm is ON. Chime is ON.
	Alarm is OFF. Chime is ON.
	Alarm is ON. Chime is OFF.

Alarm rings for 20 seconds at the designated time. To stop it manually, press button B, C or D.

■HOW TO SET THE DUAL TIME

- Time in a different time zone can be displayed.

Dual Time Mode Indicator



1. Press button B twice to go to the Dual Time Mode. Mode indicator "DT" appears.
2. Press button D to switch to the Dual Time Setting Display. The hour digits start flashing.
3. Press button C to adjust the hour digits.

Each press of button C advances the digit by one. To advance the digits quickly, keep button C pressed.

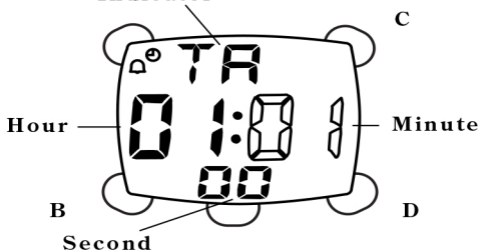
4. Press button D to confirm the hour digits and move on to the minute setting.
5. Adjust the minute digits with button C and confirm it with button D in the same way as Step 3&4.
6. After all the adjustments are completed, press button B to return to the Normal Time Display.

■HOW TO USE THE COUNTDOWN TIMER

- The timer can be set up to 23 hours, 59 minutes and 59 seconds in one second increments.

Timer setting

Countdown Mode Indicator



1. Press button B three times to go to the Countdown Mode. Mode indicator "TR" appears.
2. Press button D to switch to the Timer Setting Display. The hour digits start flashing.
3. Press button C to adjust the hour digits.

Each press of button C advances the digit by one. To advance the digits quickly, keep button C pressed.

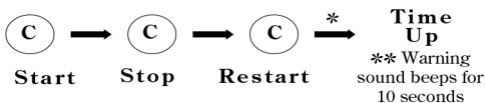
- Press button D to confirm the hour digits and move on to the minute setting.
- Adjust the minute and second digits with button C and confirm it with button D in the same way as Step 3 & 4.

The item to be adjusted is shown in the following order with each press of button D.

Hour → Minute → Second

- After all the adjustments are completed, press button B to return to the Normal Time Display.

Timer Operation



- * Stop and restart of the timer can be repeated by pressing button C. To reset the timer time before reaching time up, press button D.
- ** When the timer time is up, the warning sound beeps for 10 seconds, and automatically reset. To stop the warning sound manually, press button B, C or D.
- Once the timer time is set, it is retained and can be used repeatedly unless it is readjusted.

■ HOW TO USE THE STOPWATCH

- The stopwatch can measure up to 59 minutes, 59 seconds and 99 in 1/100 second readout.

Stopwatch Mode Indicator



Stopwatch operation

Press button "B" for four times to go to the Stopwatch Mode. Mode indicator "ST" appears.

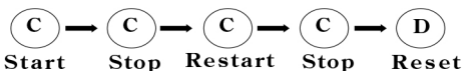
Standard Measurement

- Press button C to start the stopwatch.
- Press button C to stop.
- Press button D to reset the stopwatch.



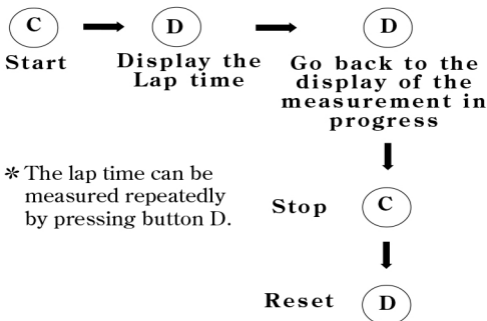
Accumulated Elapsed Time Measurement

Stop and restart of the stopwatch can be repeated by pressing button C.



Lap Time Measurement

1. Press button C to start the stopwatch.
2. To display the lap time, press button D during the measurement. The lap time is shown on the display while the measurement is still in progress internally.
3. Press button D to go back to the display of the measurement in progress.
4. Press button C to stop.
5. Press button D to reset.



ILLUMINATING LIGHT

Illuminating light
for
3 seconds



- To turn the light on, press button E in any mode. The electroluminescent backlight illuminates the display for viewing in the dark.
- For 3-second delayed lighting, press button A in any mode. The electroluminescent backlight illuminates the display for 3 seconds and turns off automatically.

■ LUMIBRITE WATCH

(dial, hands, buttons, case, bezel, strap, etc.)



* If your watch is a LORUS LUMIBRITE watch, it has following features.

LORUS LUMIBRITE watches absorb and store light energy from natural and artificial light sources and emit light in the dark. They are made of environmentally friendly material, and therefore, are harmless to human beings and the environment.

- With a full charge, LORUS LUMIBRITE watches glow in the dark hours longer than conventional luminous watches of this type. If exposed to a light of more than 500 lux (i.e., the brightness of a typical office) for approximately 10 minutes, or direct sunlight for 2 minutes, they will glow for hours.
- Since LORUS LUMIBRITE watches emit the light they store, the brightness will decrease gradually over time. The length of time they will glow may also differ slightly depending on such factors as the brightness of and distance from the light source used to charge the watch.

■ BATTERY CHANGE

The miniature lithium battery SONY or Panasonic CR2025, which powers your watch, should last approximately 2 years. However, because it is inserted at the factory, the actual life of the battery once in your possession may be less than 2 years. Be sure to replace the battery to prevent any possible malfunction as soon as it runs down. To replace the battery, we recommend taking the watch to a local watch repair shop.

■ CARE OF YOUR LORUS WATCH

This watch contains precise electronic components. Never attempt to open the case or remove the back cover.

• BATTERY



CAUTION

Do not expose the old battery to fire or recharge it. Keep it at a place beyond the reach of children. If a child swallows it, consult a doctor immediately.

• WATER RESISTANT

- * If your watch is 200 M/20 BAR, 100 M/10 BAR or 50 M/5 BAR water resistant, it is so indicated on the dial/case back.

Condition of use Indication on the dial/ case back	Accidental contact with water, such as splashes and rain	Swimming and taking a shower	Skin diving	Scuba diving
No Indication	NO	NO	NO	NO
WATER RESISTANT	YES	NO	NO	NO
WATER RESISTANT (50M/5 BAR)	YES	YES	NO	NO
WATER RESISTANT (100M/10 BAR) or above	YES	YES	YES	NO

- Do not operate the buttons when the watch is wet.
- If the watch is exposed to salt water, rinse it in fresh water and then wipe it thoroughly dry.
- Should you find any water or condensation inside the watch, immediately have it checked. Water can corrode electric parts inside the case.

Caution:

Leather straps are not water resistant except so indicated, even if the watch head is water resistant.

• ALLERGIC REACTION

Because the case and band touch the skin directly, it is important to clean them regularly. If not, shirt sleeves may be stained and those with delicate skin may develop a rash. Please wear the watch with some play to avoid any possible allergic reaction. If you develop a rash on your wrist, stop wearing and consult a physician.

• MAGNETISM/ STATIC ELECTRICITY

Your watch will not be affected by magnetism generated by household electric appliances but keep your watch away from a place where the watch is subject to strong electric field and static electricity.

• SHOCKS AND VIBRATIONS

Your watch may be worn for normal sports activities, However, be careful not to drop it or hit it on hard surfaces and avoid any severe impacts.

• TEMPERATURE

Your watch works with stable accuracy within a temperature range between 0°C and 50 °C. Do not expose the watch to a place exceeding this temperature range.

• CLEANING

Use only a soft cloth and clean water for cleaning your watch. Never use chemicals, especially soap.

■ SERVICE

When your LORUS watch requires repair or servicing, please see the enclosed WARRANTY/GUARANTEE.