

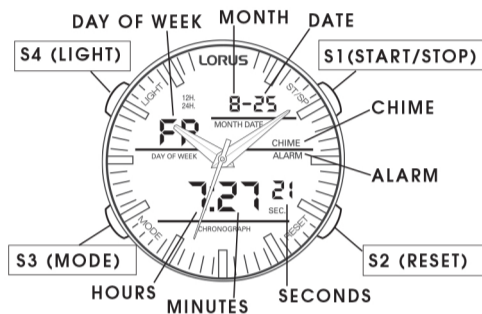
Instruction Manual



CHARACTERISTICS

- Analogue & digital time displays:** Hour, Minute, Second, Month, Date and Day of the week.
- Daily alarm and hourly chime:** The alarm can be set to sound at the designated time on a 24-hour basis and the chime can be set to sound every hour on the hour with a single beep.
- Stopwatch:** The stopwatch can measure up to 23 hours 59 minutes and 59 seconds in 1/100-second increments. Split time measurement is available.
- Selection of 12 or 24-hour format:** The time display format in either 12-hour indication or 24-hour indication can be selected.
- EL backlight:** The built-in electro-luminescent (EL) backlight illuminates the display for easy viewing in darkness.

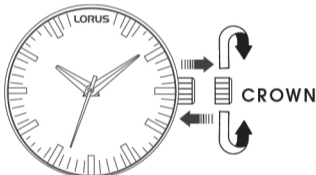
DISPLAY AND BUTTON FUNCTION



SETTING THE TIME (ANALOGUE)

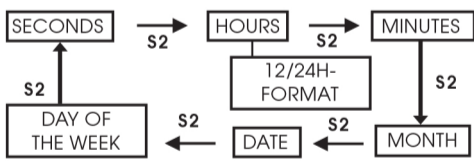
- Pull the crown out one step, the second hand will stop.
- Set the correct time by turning the crown.
- Push the crown back to the original position. The watch will start running again.

* The analogue indication and digital display of the time setting can be adjusted separately.

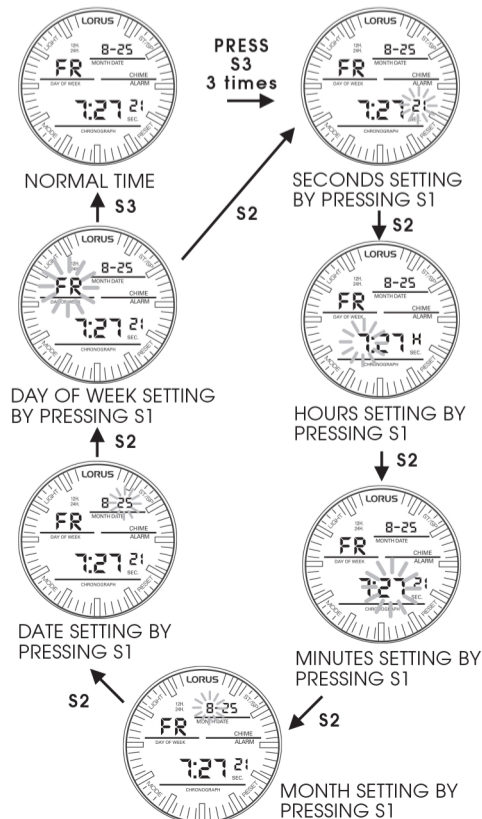


HOW TO SET TIME/CALENDAR

- From NORMAL TIME mode, press S3 button three times to begin setting procedure. The second digits start flashing.
 - Press S1 button to reset the second digits to zero.
 - If S1 button is pressed when the second digits are in a range between 30 and 59, the second digits will be reset to 00 and one minute will be added. If S1 button is pressed when the second digits are in a range between 00 and 29, the second digits will be reset to 00 and the minute digits will be unchanged.
 - Press S2 button to move on to HOURS setting.
- * Selection of the digits to be adjusted is made in the following order by pressing S2 button. Press S1 button to adjust the value.
- * When setting HOURS, "H" stands for 24-hour format, "A" or "P" stands for 12-hour format.



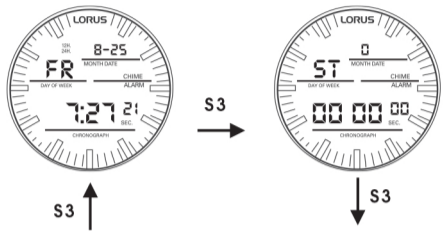
- Press S3 button after completing the setting.



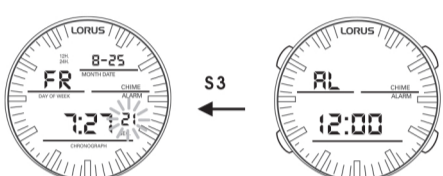
HOW TO CHANGE THE DISPLAY MODE

- Press S3 button to show the NORMAL TIME mode.
- If the NORMAL TIME mode is shown already on the display, skip the above operation.
- Press S3 button to change the display mode in the following order.

NORMAL TIME mode STOPWATCH mode



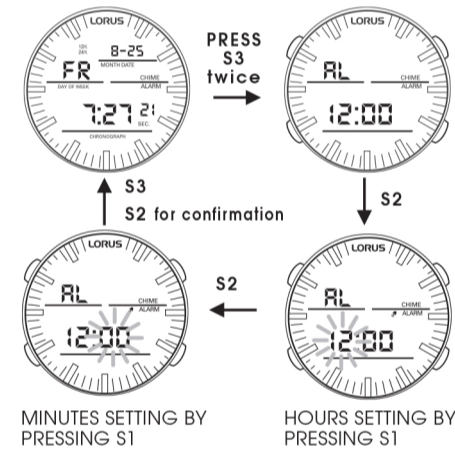
TIME SETTING mode ALARM mode



HOW TO SET ALARM TIME

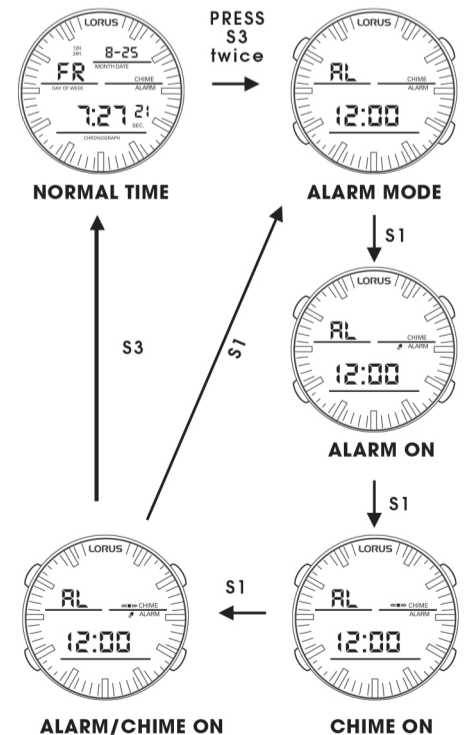
- From NORMAL TIME mode, press S3 button twice to enter the ALARM mode.
- Press S2 button to begin setting procedure. The hours digit starts flashing.
- Press S1 button to set HOURS setting.
- Press S2 button to move on to MINUTES setting. Press S1 button to set MINUTES setting.
- Press S2 button to confirm the settings.
- Press S3 button to return to NORMAL TIME mode.

NORMAL TIME mode ALARM mode



Engagement/Disengagement of ALARM & CHIME

- In the ALARM setting mode, with each press of S1 button, the ALARM and CHIME can be engaged or disengaged in the following order. The ALARM signal and/or CHIME signal appear or disappear on the display accordingly.



How to stop the alarm sound

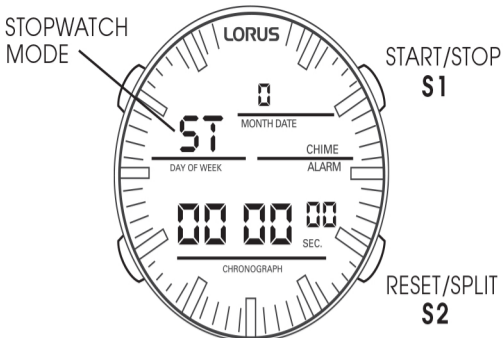
Press S1 or S2 to stop the alarm while it is sounding.

Snooze function

Press S3 to turn the snooze function on or off alternately. When the snooze function is enabled, the alarm will stop sounding temporarily and go off again 5 minutes later for 20 seconds and automatically stop.

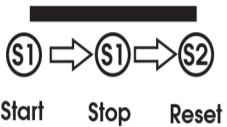
■ HOW TO USE STOPWATCH

- * From NORMAL TIME mode, Press S3 button once to enter the STOPWATCH mode.



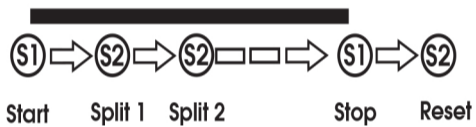
Standard Measurement

1. Press S1 button alternately to start and stop the STOPWATCH.
2. Press S2 button to reset the STOPWATCH to "00:00:00."



Split Time Measurement

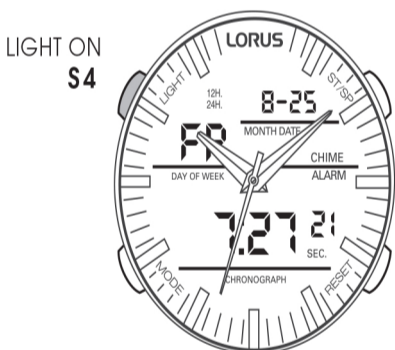
1. Press S1 to start counting first split time.
 2. Press S2 button, the STOPWATCH keeps counting first split time and showing it on the display.
 3. Press S1 button to stop counting first split time.
 4. Press S2 button to release first split time.
 5. Press S1 button to start counting second split time. The STOPWATCH shows second split time.
- * This operation can be repeated and the split time can be read.
6. Press S2 to finish counting the split time.
 7. Press S2 again to reset the STOPWATCH to "00:00:00."



- * Press S3 button return to NORMAL TIME display.

■ HOW TO USE EL BACKLIGHT

- * Press S4 button in any mode to turn the illuminating light on.



Note:

1. The backlight of the watch employs an electro-luminescent (EL) light, which tends to lose illuminating power after very long use.
 2. The illumination provided by backlight may be hard to see when viewed under direct sunlight.
- * When the illuminating light becomes dim, replace the battery with new one.

■ BATTERY CHANGE

This watch is powered by two batteries, one for the analogue movement and the other for the digital movement.

Analogue quartz movement: The miniature battery SEIKO SR626SW, Maxell SR626SW or SONY SR626SW.

Digital quartz movement: The miniature battery SEIKO CR2025, Maxell CR2025 or SONY CR2025 which powers your watch should last approximately 2 years each. However, because it is inserted at the factory, the actual life of the battery once in your possession may be less than 2 years.

Be sure to replace the batteries to prevent any possible malfunction as soon as they run down. To replace the batteries, we recommend taking the watch to a local watch repair shop.

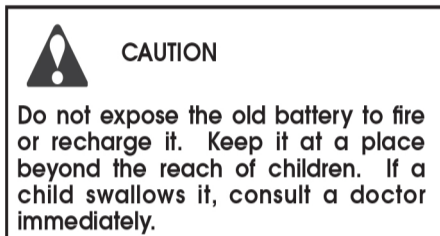
Note: If the alarm is used for more than 60 seconds a day, the battery life may be less than the specified period.

After the batteries are replaced with new ones, set the time, calendar and alarm.

■ CARE OF YOUR LORUS WATCH

This watch contains precise electronic components. Never attempt to open the case or remove the back cover.

• BATTERY



• WATER RESISTANT

Condition of use	Accidental contact with water, such as splashes and rain	Swimming and taking a shower	Skin diving	Scuba diving
Indication on the dial/case back				
No Indication	NO	NO	NO	NO
WATER RESISTANT	YES	NO	NO	NO
WATER RESISTANT (50M/5 BAR)	YES	YES	NO	NO
WATER RESISTANT (100M/10 BAR) or above	YES	YES	YES	NO

- * If your watch is 200 M/20 BAR, 100 M/10 BAR or 50 M/5 BAR water resistant, it is so indicated on the dial/case back.

- Do not operate the buttons when the watch is wet.
- If the watch is exposed to salt water, rinse it in fresh water and then wipe it thoroughly dry.
- Should you find any water or condensation inside the watch, immediately have it checked. Water can corrode electric parts inside the case.

Caution:

Leather straps are not water resistant except so indicated, even if the watch head is water resistant.

• ALLERGIC REACTION

Because the case and band touch the skin directly, it is important to clean them regularly. If not, shirt sleeves may be stained and those with delicate skin may develop a rash. Please wear the watch with some play to avoid any possible allergic reaction. If you develop a rash on your wrist, stop wearing and consult a physician.

• MAGNETISM

Your watch will be adversely affected by strong magnetism. Keep it away from close contact with magnetic objects.

• SHOCKS AND VIBRATIONS

Your watch may be worn for normal sports activities, but be careful not to drop it or hit it on hard surfaces.

• TEMPERATURE

Your watch is preadjusted so that constant accuracy may be insured at normal temperature.

• CLEANING

Use only a soft cloth and clean water for cleaning your watch. Never use chemicals, as the waterproof gasket will corrode.

■ SERVICE

When your LORUS watch requires repair or servicing, please see the enclosed WARRANTY/GUARANTEE.